

APPLICATION FOR ENROLLMENT

APPLICATION DEADLINE: JUNE 21, 2019

INFANT, EARLY CHILDHOOD, AND PARENT PSYCHOTHERAPY PROGRAM

NAME _____

ADDRESS _____

CITY _____ ZIP _____

PHONE _____

EMAIL _____

DEGREE _____ PROF LICENSE _____

REQUIREMENTS:

- BA OR MA DEGREE MINIMUM
(COPY OF TRANSCRIPTS MUST BE SUBMITTED WITH ENROLLMENT.)
- PARTICIPANT MUST BE INTERVIEWED BY PROGRAM DIRECTORS PRIOR TO ENROLLMENT

FEES (reading materials included): \$1,600.00
STUDENTS/INTERNS WITH ID: \$1,300.00

LAISPS accepts checks and major credit cards. To use a credit card, please visit www.LAISPS.org to make your payment. To pay by check, please complete the above information and send your payment to:

(Payment will be requested upon admission approval has been granted from Program Directors)

LAISPS

12011 SAN VICENTE BOULEVARD, SUITE 520
LOS ANGELES, CALIFORNIA 90049

FOR MORE INFORMATION:

(310) 440-0333 admin@laisps.org

Or

Visit our website: www.laisps.org

For those who are not already members of LAISPS, \$5.00 of this registration fee qualifies you as a Community Member of LAISPS for the academic year (September 1 to August 31 of the following year). Each LAISPS Community Member is entitled to access to the LAISPS library, the right to receive any announcements of LAISPS course offerings, lectures and other events. Community Members have the right to enroll in educational courses for which they have the requisite qualifications and for which space is available. Enrollment in certain courses and curricula, especially courses and curricula leading to the award of a degree or certificate, is restricted and only available to members on a competitive basis with enrollment not guaranteed.

REFUND INFORMATION:

A student has the right to a full refund of all charges if she/he cancels the enrollment agreement prior to or on the first day of instruction. In addition, a student may withdraw from a course after instruction has started and receive a pro-rata refund for the unused portion of the tuition and other refundable charges if she/he has completed 60% or less of the instruction. In the following example, a student who completed 10 hours of a 108-hour program for which she/he paid \$2,200 in tuition would receive a \$1,996.30 refund.

Sample Refund Formula:

Hours Paid For - Hours Attended x Total
108 hours - 10 hours x \$2,200 = \$1,996.30

LAISPS

LOS ANGELES INSTITUTE AND SOCIETY FOR PSYCHOANALYTIC STUDIES

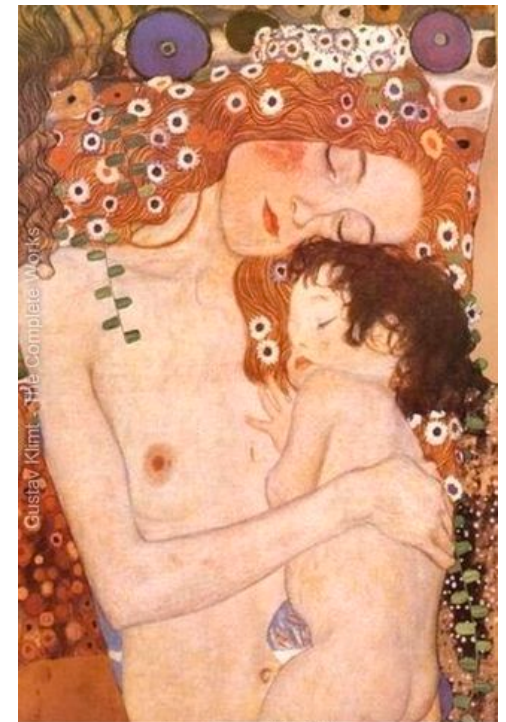
12011 San Vicente Boulevard, Suite 520
Los Angeles, CA 90049



An Interdisciplinary Group

*A Component Society of the International
Psychoanalytical Association*

EXTENSION DIVISION PRESENTS



INFANT, EARLY CHILDHOOD, AND PARENT PSYCHOTHERAPY PROGRAM

OCTOBER 15, 2019 - MAY 5, 2020

COURSE DESCRIPTION

WE HAVE DESIGNED THIS COURSE SPECIFICALLY FOR MENTAL HEALTH PROFESSIONALS WHO WISH TO DEEPEN AND BROADEN THEIR DEVELOPMENTAL UNDERSTANDING OF PARENTING, INFANCY AND THE YOUNG CHILD. THIS COURSE WILL ALSO HELP HONE EACH CLINICIAN'S OBSERVATIONAL AND TECHNICAL SKILLS WHEN WORKING WITH PARENTS, INFANTS AND YOUNG CHILDREN.

THE OPTIONAL SECOND YEAR OF THE PROGRAM WILL FOCUS ON INCREASING THE PARTICIPANTS' EXPERTISE IN CLINICAL WORK WITH INFANTS, YOUNG CHILDREN AND PARENTS THROUGH USE OF SMALL CONSULTATION GROUPS. THESE GROUPS WILL ALLOW PARTICIPANTS TO PRESENT CLINICAL CASE MATERIAL AS WELL AS EXPERIENCE AND ENGAGE IN SPECIAL INTEREST SEMINARS ON TOPICS SUCH AS UNDERSTANDING CHILDHOOD DREAMS, THE IMPACT OF ILLNESS ON CHILDREN AND PARENTS, ISSUES RELATING TO DIVORCE, ADOPTION, ETC.

GOALS AND OBJECTIVES

UPON COMPLETION OF THIS PROGRAM PARTICIPANTS WILL BE ABLE TO:

- IDENTIFY ESSENTIAL CLINICAL AND THEORETICAL CONCEPTS RELATING TO PARENTING, INFANCY AND EARLY CHILDHOOD FROM A PSYCHOANALYTIC DEVELOPMENTAL PERSPECTIVE.
- WORK MORE EFFECTIVELY AND THERAPEUTICALLY WITH PARENTS, INFANTS AND YOUNG CHILDREN.
- DEEPEN CRITICAL THERAPEUTIC SKILLS OF OBSERVATION, CONTAINMENT AND COMMUNICATION THROUGH EXPERIENCE OF THE WATCH, WAIT AND WONDER METHOD OF CHILD-PARENT INTERACTION.
- INTEGRATE CONTEMPORARY VIEWS OF GENDER, WITH A FOCUS ON HOW YOUNG CHILDREN EXPERIENCE THEIR EMERGING SEXUAL SELVES AND IDENTIFICATIONS.

SCHEDULE OF CLASSES

DATES:
ONCE A WEEK ON TUESDAYS
OCTOBER 15, 2019 – MAY 5, 2020

TIMES:
6:00 – 8:00 P.M.

LOCATION:
LAISPS CLASSROOMS
12011 SAN VICENTE BLVD., SUITE 520
LOS ANGELES, CA 90049

A CERTIFICATE OF COMPLETION WILL BE AWARDED WHEN PARTICIPANTS COMPLETE COURSE REQUIREMENTS.

CONTINUING EDUCATION



Important Disclosure: None of the planners or presenters of this CME/CE program has any relevant financial relationship to disclose.

Accreditation Statement: LAISPS is accredited by the Institute for Medical Quality/California Medical Association (IMQ/CMA) to provide continuing medical education for physicians. LAISPS takes responsibility for the content, quality and scientific integrity of this CME activity.

Physicians: LAISPS designates this educational activity for a maximum of 24 *AMA PRA Category 1 Credits*. Physicians should only claim credit commensurate with the extent of their participation in the activity. This credit may also be applied to the CMA Certificate in Continuing Medical Education.

Psychologists: Approval by the American Psychological Association to sponsor continuing education for psychologists is pending. LAISPS maintains responsibility for this program and its contents.

Board of Behavioral Sciences: The California Board of Behavioral Sciences accepts courses approved by the APA for Continuing Education for LCSW, LMFT, LPCC and LEP licenses.

To Earn Credit: Participants must complete an online evaluation within two weeks of completing each session of this CE/CME activity in order to receive credit.

Attention Psychologists: Psychologists can earn a maximum of 24 CE credits for this program, pending APA approval. For psychologists to receive credit for any given session, all classes of the session must be attended. Partial credit may not be awarded, based on APA guidelines.

LAISPS BOARD OF DIRECTORS

Lanning M. Melville, Psy.D.
PRESIDENT

Pamela P. Dirham, Ph.D.
DIRECTOR OF TRAINING & CHAIR OF EDUCATION

Mariann Hybels Miller, Ph.D.
SECRETARY

Kevin J. Wittenberg, Ph.D.
TREASURER

Richard J. Gribin, M.F.T.
MEMBER-AT-LARGE

Diane L. Mink, Ph.D.
MEMBER-AT-LARGE

Sandra Wilder-Padilla, Ph.D.
MEMBER-AT-LARGE

Leslie J. Margolis, M.F.T.
CANDIDATE REPRESENTATIVE

PROGRAM DIRECTORS

BETH I. KALISH, PH.D.

JESSICA A. LEHMAN, PSY.D.
KATHLEEN M. CAMPBELL, PSY.D.